

GREATER WHITSUNDAY BIOMANUFACTURING

BLUEPRINT 1.0

UPDATE

April 2024

BACKGROUND

In February 2024, Greater Whitsunday Alliance and the Queensland Government released the Greater Whitsunday Biomanufacturing Blueprint 1.0.

The Blueprint outlines the region's aspirations and actions required to establish a biomanufacturing industry based on the following competitive advantages:

- Access to feedstock
- Precinct development opportunities
- Supporting infrastructure, transport, supply chain and utilities
- Access to renewable energy
- Proven research capability
- Dynamic workforce development

This update provides contemporary information on the progress of regional plans and developments.

\$16 million upgrade to QUT Mackay Renewable Biocommodities Pilot Plant (MRBPP)



A further \$3.9 million in funding was announced to complete the transformation of the QUT Mackay Renewable Biocommodities Pilot Plant (MRBPP) into a state-of-the-art food-grade compliant facility, which will enhance Australia's ability to produce novel food ingredients.

The latest co-investment between QUT and Australia's Food and Beverage Accelerator (FaBA) will significantly expand the facility's capability and allow companies to fast-track product development in the food and beverage sector.

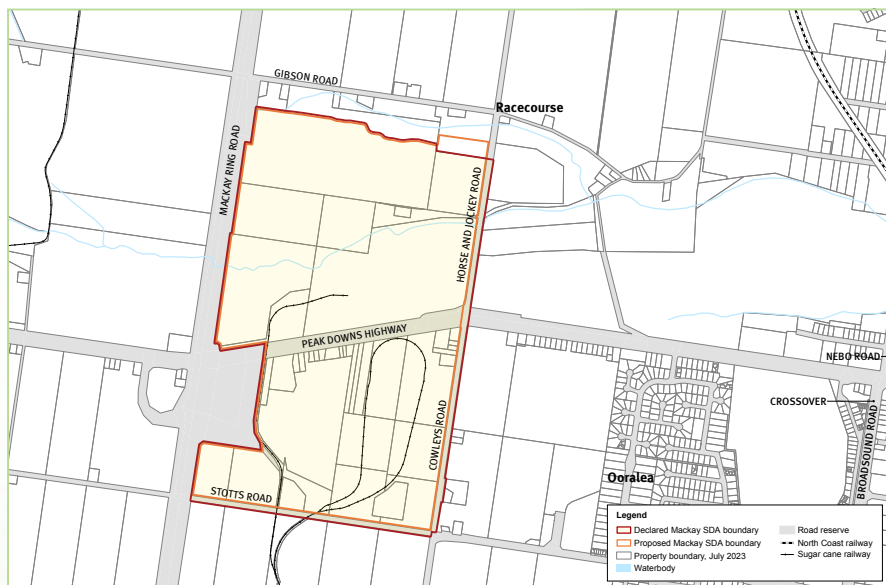
This project is part of an overall \$16 million upgrade to the facility to be completed by mid-2024, which will transform the pilot plant into Australia's leading physical containment level 2 (PC2) large scale food-grade research translation facility.

Declaration of the Mackay State Development Area

The Queensland Government declared the Mackay State Development Area (SDA) in February 2024.

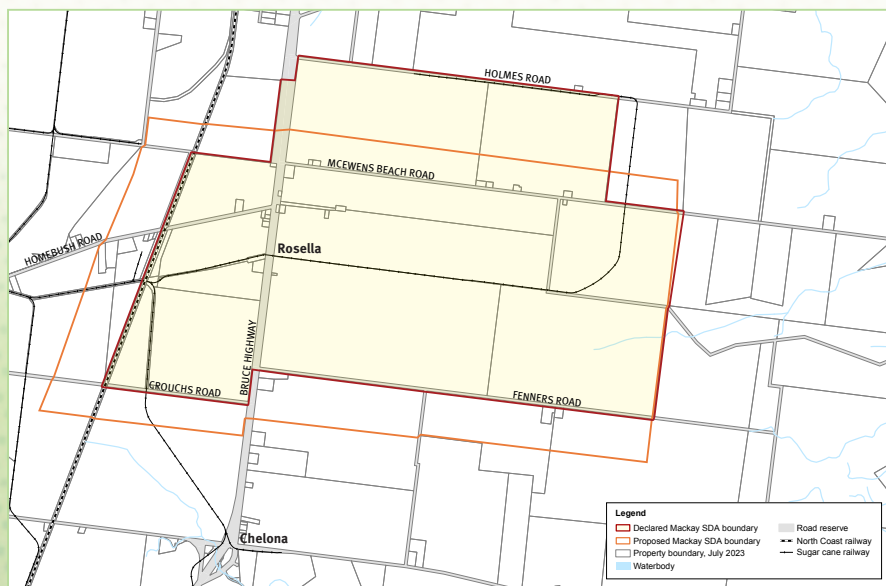
The 907ha SDA includes the Racecourse Mill and Rosella areas, with both areas presenting unique opportunities.

A development scheme will now be prepared that sets the rules and guides future development in the SDA. Until the development scheme is approved, there are no changes to the current planning and development assessment arrangements.



Racecourse Area

- 137ha area with short to medium term opportunities for pilot and demonstration commercial-scale projects.
- Opportunity to co-locate with existing sugar mill and build on existing infrastructure supporting the sugar refinery and co-generation facilities.
- Mackay Sugar Limited owns a large proportion the SDA area, providing opportunities for master planning and development.
- Direct access to the Peak Downs Highway and adjacent to the Mackay Ring Road.



Rosella Area

- This 770ha strategic location has been acknowledged in both Mackay Regional Council and State Government planning frameworks for medium to long term industrial development.
- Economic Development Queensland owns approximately 211ha within the Rosella area.
- It features suitable topography, as the area is relatively flat with only minor contouring.
- Transport linkages with the North Coast Rail Line and the Bruce Highway bisecting the area.
- Well-separated from residential communities and areas of environmental significance.

References

<https://www.statedevelopment.qld.gov.au/coordinator-general/state-development-areas/current/mackay-state-development-area>

<https://www.qut.edu.au/news?id=192812>

For further information:

Kylie Porter - Chief Executive Officer, Greater Whitsunday Alliance

kylie@gw3.com.au • +61 417 705 245